



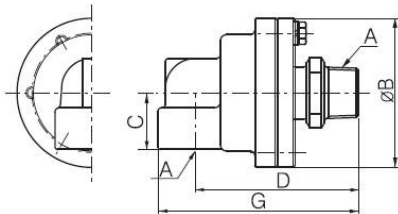
## ■ Operating Condition

Size Range : 15A~40A ( $\frac{1}{2}$ "~ $1\frac{1}{2}$ "")  
 Max. Pressure : 23kg/cm<sup>2</sup> (330PSI)  
 Max. Rotation Speed : 10RPM  
 Max. Temperature : 220°C (430°F)  
 Media : Steam, Hot Oil, Water

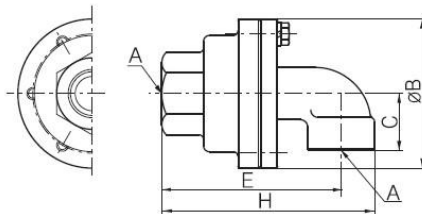
## ■ Features / 특징

- Spherical Seal Type
- Auto adjustment for Shaft angle
- Switchable between Heating & Cooling water
- Designed to Hot press for Tire mold
- Series KJ200은 구면씰 형식으로 Shaft의 각도 편심이 자동보상되며 온수 및 냉각수의 교대 사용이 가능하며 특히 타이어몰드의 Hot press의 배관에 추천됩니다.

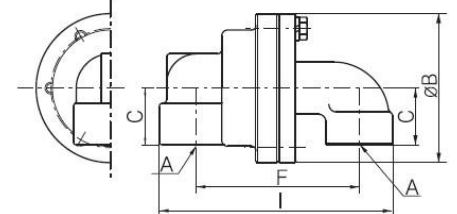
## KJ200 (Knuckle Joint)



Type B



Type C



Type D

[unit : mm]

Nominal Size	A (PT)	B	C	D	E	F	G	H	I	Weight(kg)		
										Type B	Type C	Type D
15A	1/2"	70	30	84	82	75	100	98	107	1.0	1.0	1.1
20A	3/4"	85	30	97	93	92	116	111	130	1.6	1.6	1.8
25A	1"	100	38	110	120	110	135	143	157	2.5	2.6	2.8
32A	1-1/4"	118	45	131	145	140	159	173	196	3.9	4.0	4.2
40A	1-1/2"	126	55	140	150	145	170	180	208	5.0	4.9	5.2